

TEFCE Toolbox

An Institutional Self-Reflection Framework for Community Engagement in Higher Education

WHY COMMUNITY ENGAGEMENT?

- Universities play a crucial role in addressing societal needs, from supporting social development at the local level to helping solve global societal challenges.
- Community engagement refers to how universities address societal needs through mutually beneficial partnerships with their communities.
- 'Communities' include public authorities, businesses, schools, cultural institutions, civil society and others.

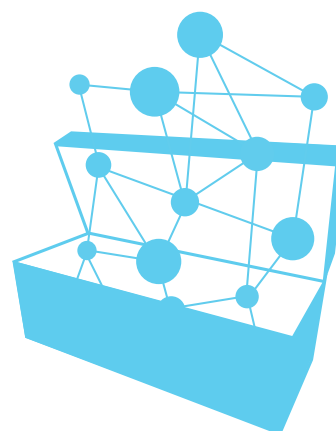


HOW TO MEASURE ENGAGEMENT?

- There have been attempts to measure community engagement through quantitative benchmarks.
- But measuring community engagement is difficult. Community engagement takes different forms depending on the university, its communities and its external environment.
- Comparing community engagement 'performance' between universities is thus unlikely to hold much value.

WHAT IS THE TOOLBOX?

- The TEFCE Toolbox for Community Engagement in Higher Education is an institutional self-reflection framework.
- The TEFCE Toolbox provides tools for universities and communities to identify community engagement practices and reflect on their achievements and room for improvement.
- It thus supports community engagement without using metrics, ranking or bureaucratic self-assessment questionnaires.



PROJECT FUNDING



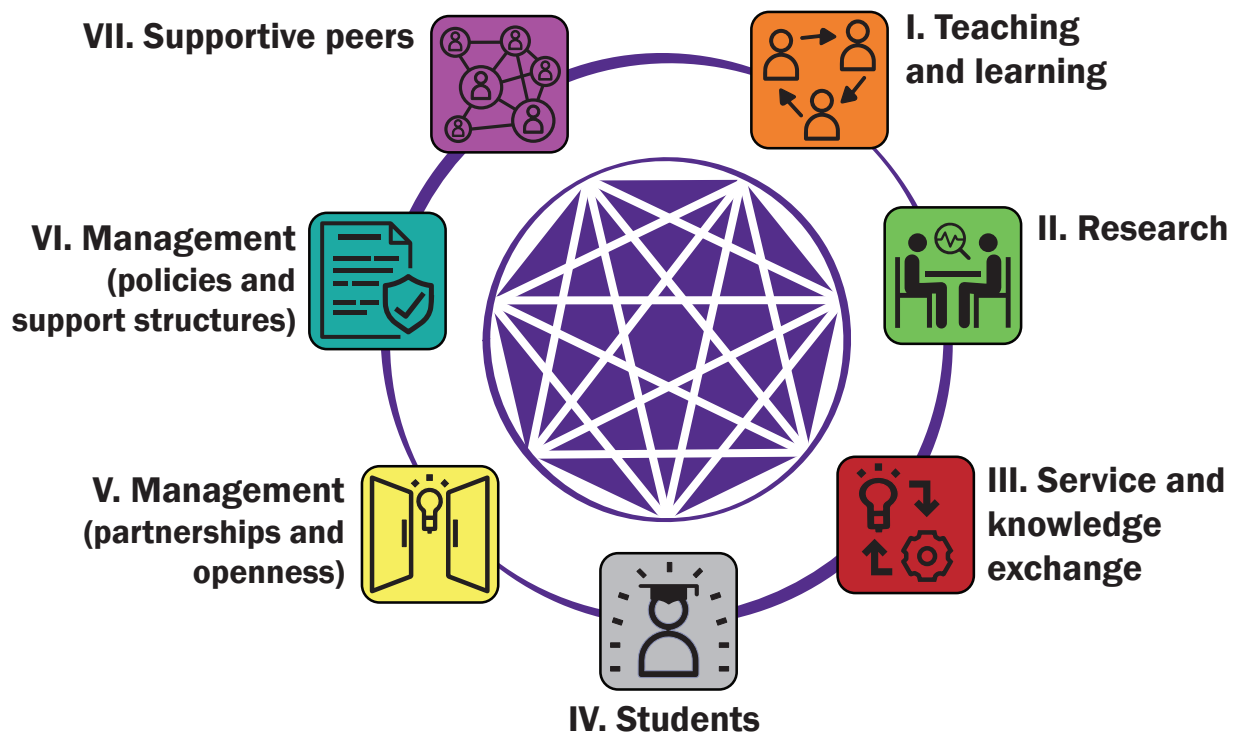
Funded by the
Erasmus+ Programme
of the European Union

PROJECT CO-FINANCING

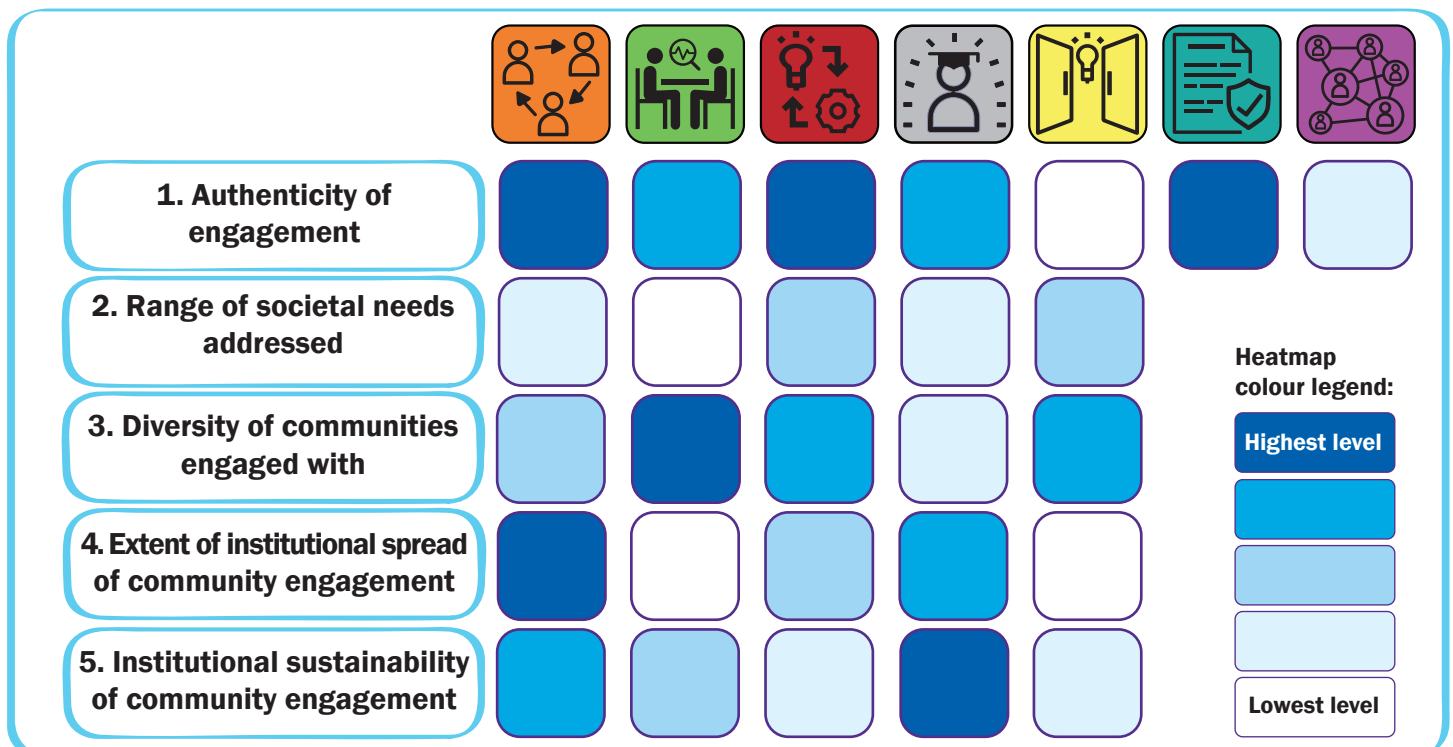


GOVERNMENT OF THE REPUBLIC OF CROATIA
Office for Cooperation with NGOs

THE TEFCE TOOLBOX IS ORGANISED AROUND 7 DIMENSIONS OF COMMUNITY ENGAGEMENT:



Following the collection of community engagement practices from around the university, the TEFCE Toolbox encourages participative discussions that result in a heatmap indicating how developed is each dimension community engagement according to five criteria, as illustrated below:



PROJECT FUNDING



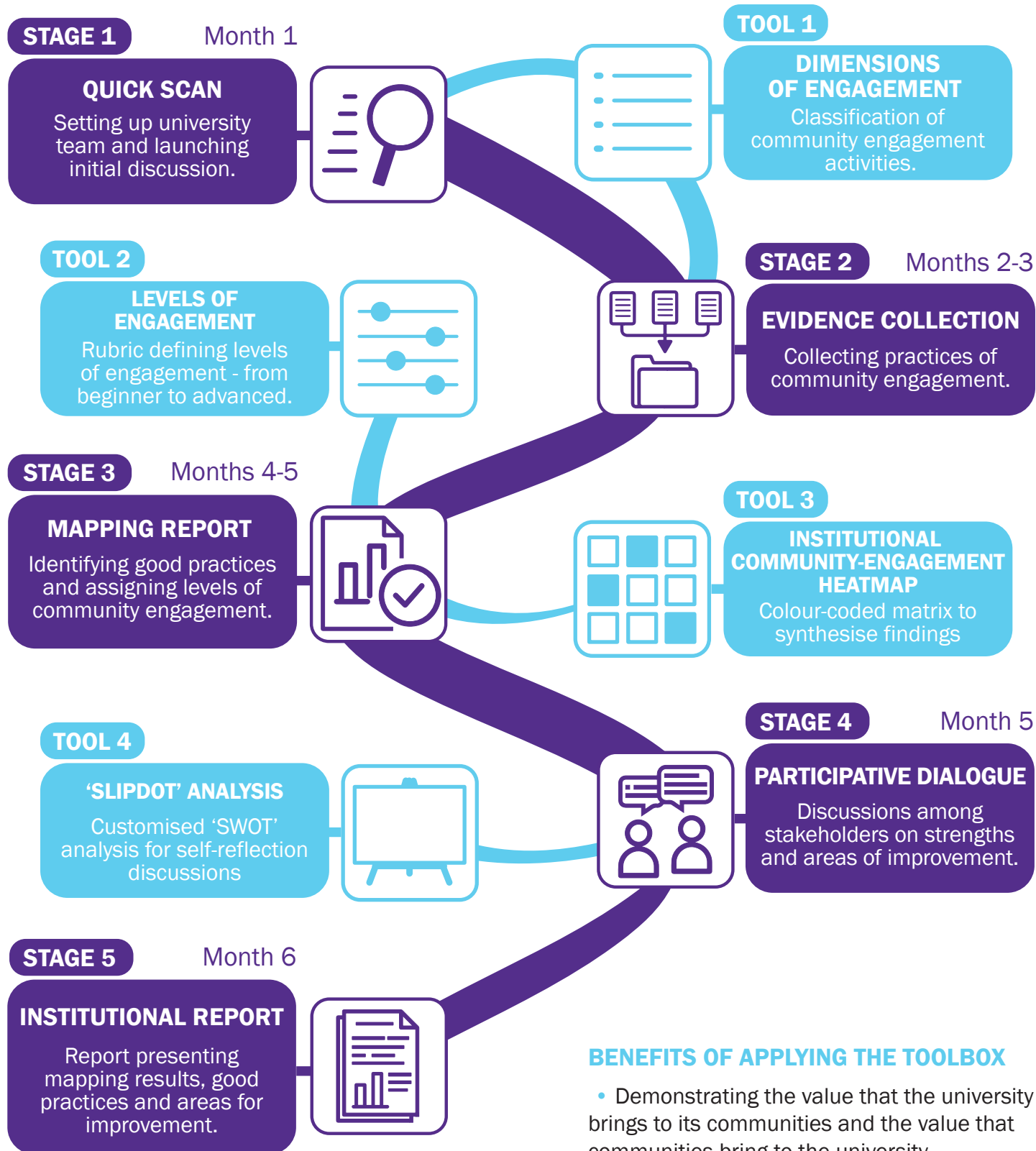
Funded by the
Erasmus+ Programme
of the European Union

PROJECT CO-FINANCING



GOVERNMENT OF THE REPUBLIC OF CROATIA
Office for Cooperation with NGOs

HOW TO APPLY THE TOOLBOX



BENEFITS OF APPLYING THE TOOLBOX

- Demonstrating the value that the university brings to its communities and the value that communities bring to the university.
- Increasing motivation of community-engaged staff, students and communities by acknowledging the value of their engagement

The TEFCE Toolbox is freely available on the website www.tefce.eu

PROJECT FUNDING



Funded by the
Erasmus+ Programme
of the European Union

PROJECT CO-FINANCING



GOVERNMENT OF THE REPUBLIC OF CROATIA
Office for Cooperation with NGOs

PROJECT COORDINATORS



PROJECT CONSORTIUM



Sveučilište u Rijeci
University of Rijeka



Dresden.
Dresden



The views expressed in this publication are the sole responsibility of the TEFCE project team, and can in no way be taken to reflect the views of the project's funding/co-funding institutions. The funding/co-funding institutions cannot be held responsible for any use which may be made of the information contained therein.

PROJECT FUNDING



Funded by the
Erasmus+ Programme
of the European Union

PROJECT CO-FINANCING



GOVERNMENT OF THE REPUBLIC OF CROATIA
Office for Cooperation with NGOs