



# The OLA and the Erasmus App

University of Barcelona, October 2018

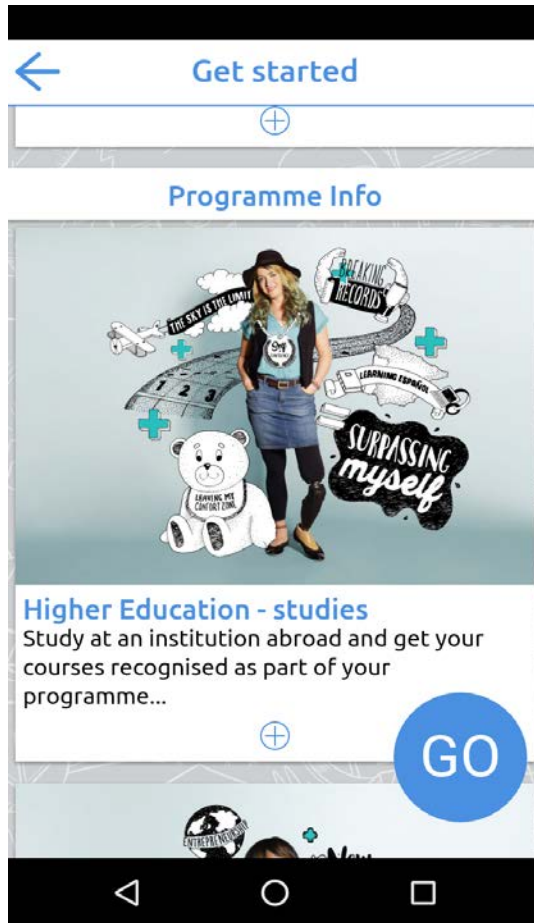
João Bacelar

## Erasmus+ App

- Launched in June 2017 for the 30<sup>th</sup> anniversary of the programme
- Aims to establish a single point of entry into the Erasmus programme for its beneficiaries
- More than 50.000 downloads to date



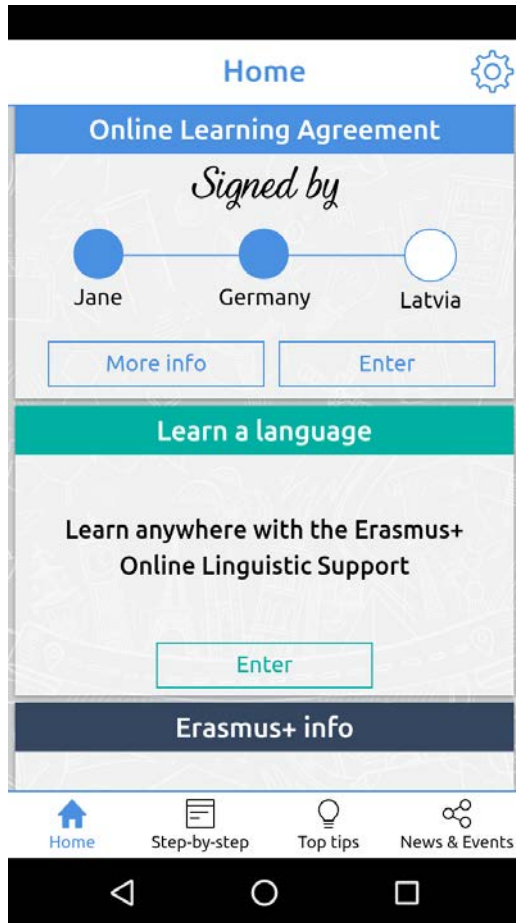
# Information about Erasmus+



## Concerning different mobility strands

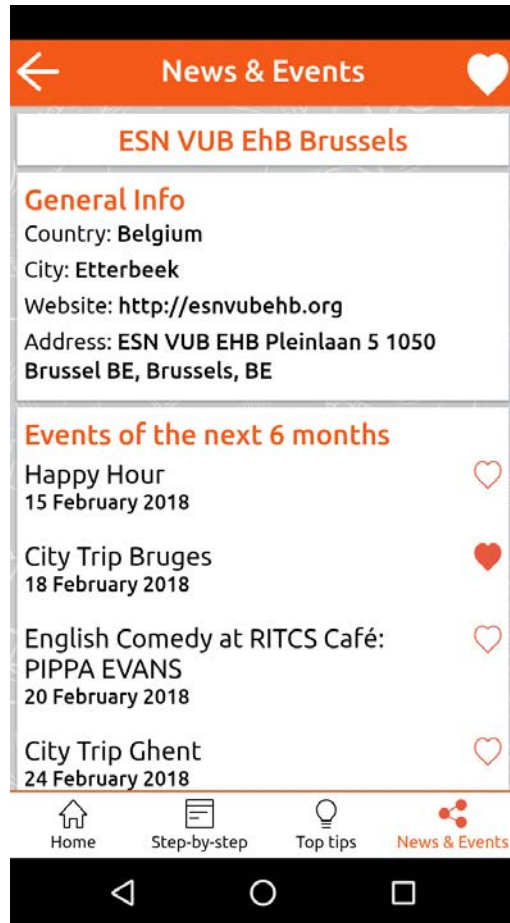
- Erasmus studies
  - Erasmus placements
  - VET
  - Youth exchanges
- 
- Social activities fetched from more than 900 cities across Europe by the Erasmus Student Network sections

# Integration with OLS and OLA



- Full integration with the OLA
  - Only once principle
  - Fill in and sign LA online
  - Live status updates
- Link to the Erasmus+ Online Linguistic Support.

# ESN news and events



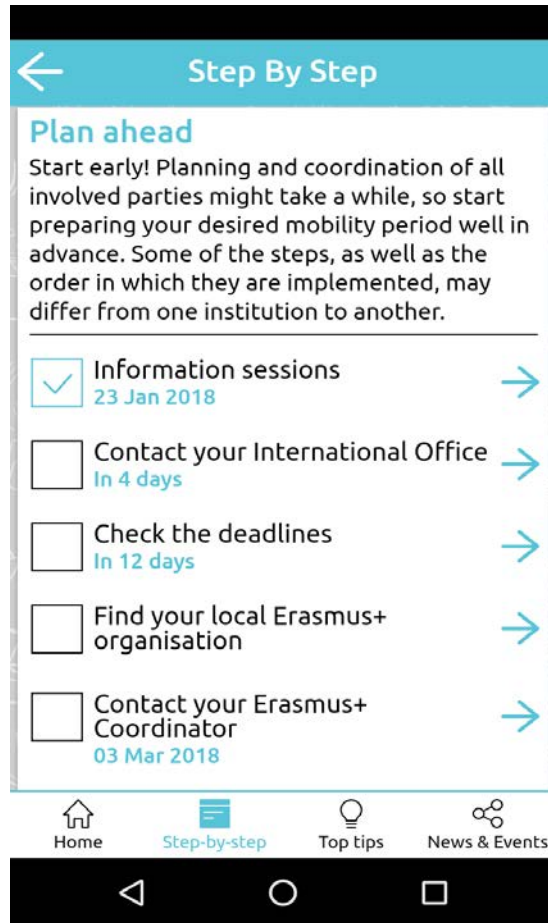
- Latest news and nearby events at student's fingertips.
- Social activities fetched from more than 900 cities across Europe by the Erasmus Student Network sections

## Erasmus+ App 2.0

- New functionality launched in 2018
- Enabling HEIs to
  - Manage custom checklists
  - Send push-notifications to app users
- And students to generate city-specific tips

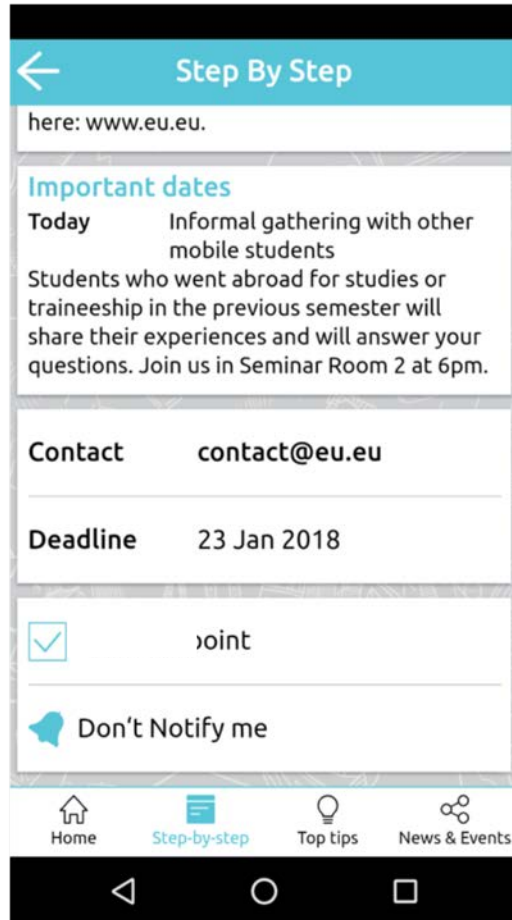


# Step-by-step Checklists



- Specific lists for each type of Erasmus+ mobility
- Everything students' need to do before, during and after the stay abroad
- Study mobility information connected with the Erasmus Dashboard for HEIs

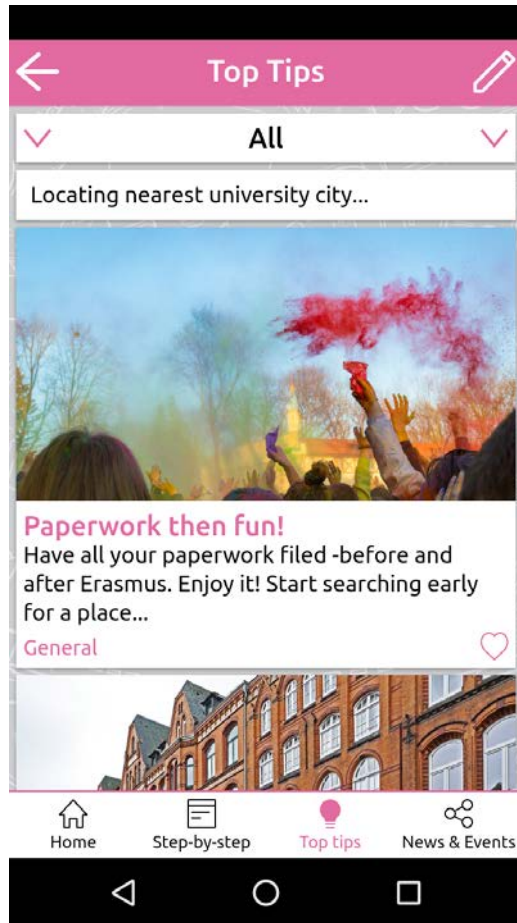
# HEIs specific information in the App



- Custom description displayed for the students
- Add specific deadlines and contacts
- Students can set reminders for important dates



# Crowd sourced student tips



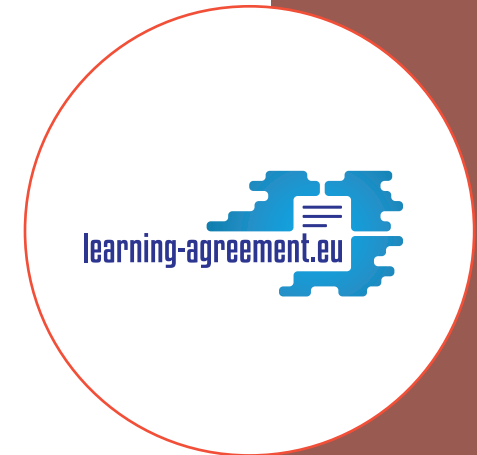
- Input from fellow Erasmus+ participants
- Different categories covering all important aspects of life:
  - Accommodation
  - Administration
  - Health
  - Managing your money
  - Social life & culture
  - Tech & Communications
  - Transportation
- City-specific (since last update)

## OLA context

- **Rational:** mandatory and unavoidable; most time-consuming step of Erasmus administration; guarantor of recognition... if done properly!
- **Key specifications:** support and speed up establishment, signing and changes; student as “document owner”; full compliance and audit proof
- **Scale:** quick deployment, universally available and free of charge

## OLA timeline

- Developed in-house in 2014
- Large scale testing EU funded project (15-17)
- OLA+ for universities/IROs (17-19)



## OLA fun facts

- Principle of student as document owner
- By students for students: ESN responsible for OLA student interface
- More than 20.000 digital LAs generated to date
- Still to come in 18: course catalogue integration
- Will become an integral part of the new Erasmus programme from 2021 onwards

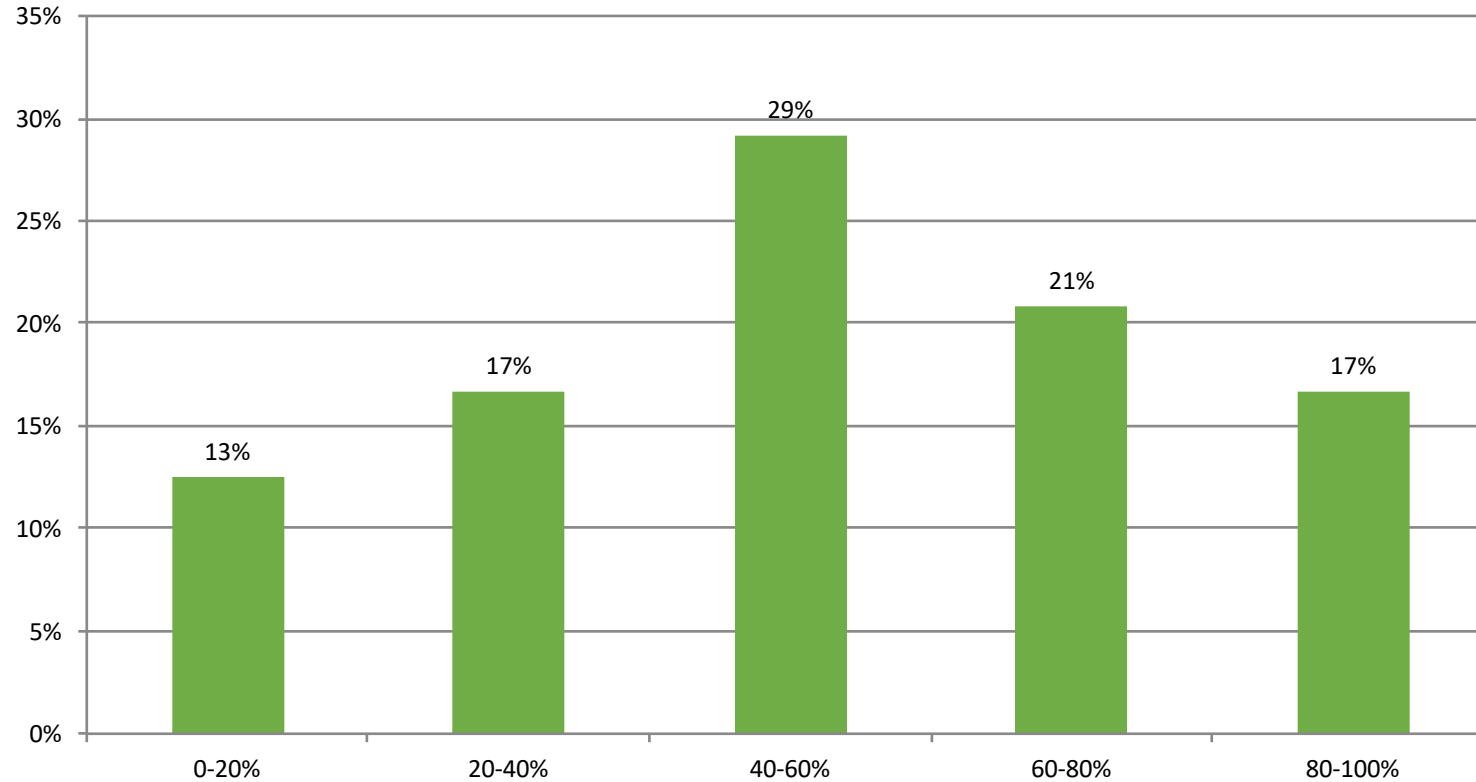


OLA satisfaction rate

87%

students

# OLA efficiency gains



**+400.000 hours of administrative work saved per year!**  
(across a population of 280.000 students)

THANK YOU FOR YOUR ATTENTION



Co-funded by the  
Erasmus+ Programme  
of the European Union